

# SALVESEN GRAHAM

THE COLLECTION

## AVENUE CANDLE HOLDER MIDNIGHT

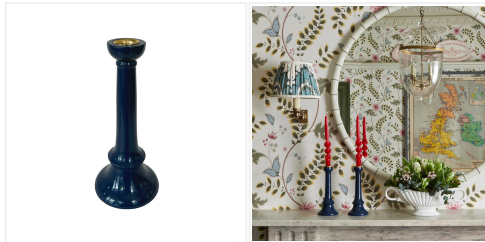
SGACC02

\$125.00

Our Avenue Candle Holders are designed to complement all pieces in The Collection by Salvesen Graham; taking inspiration from historical architecture and interiors. Mary and Nicole designed our candle holders to be displayed as a pair; a complementary finish to a mantle, dining table or console.

Featuring a heritage shape, our Avenue Candle Holders reference British Georgian facades whilst a high gloss finish and carefully curated collection of jewel colours lends a playful twist.

Handcrafted by artisans, each candle holder is hand made from mahogany wood with a brass cup. This timeless design would look at home in both classical and contemporary interiors, designed with the Salvesen Graham sensitivity to the past and present to create a relevant addition to your interior, both now and in years to come.



Salvesen Graham  
Unit 1, One Riverside,  
One Eastfields Avenue,  
London SW18 1FQ

Tel: +44 207 967 7777 | Email: [info@salvesengraham.com](mailto:info@salvesengraham.com)

# SALVESEN GRAHAM

## THE COLLECTION

**Dimensions:** L9.5cm x W9.5cm x H20.5cm

**Lead Time:**

Up to 10 weeks if not in stock

**Material:**

FSC Solid Beech Wood, Brass, High Gloss Painted Finish

**Production:**

Hand Painted, Hand Crafted

Salvesen Graham  
Unit 1, One Riverside,  
One Eastfields Avenue,  
London SW18 1FQ

Tel: +44 207 967 7777 | Email: [info@salvesengraham.com](mailto:info@salvesengraham.com)